

# Welcome to LSE

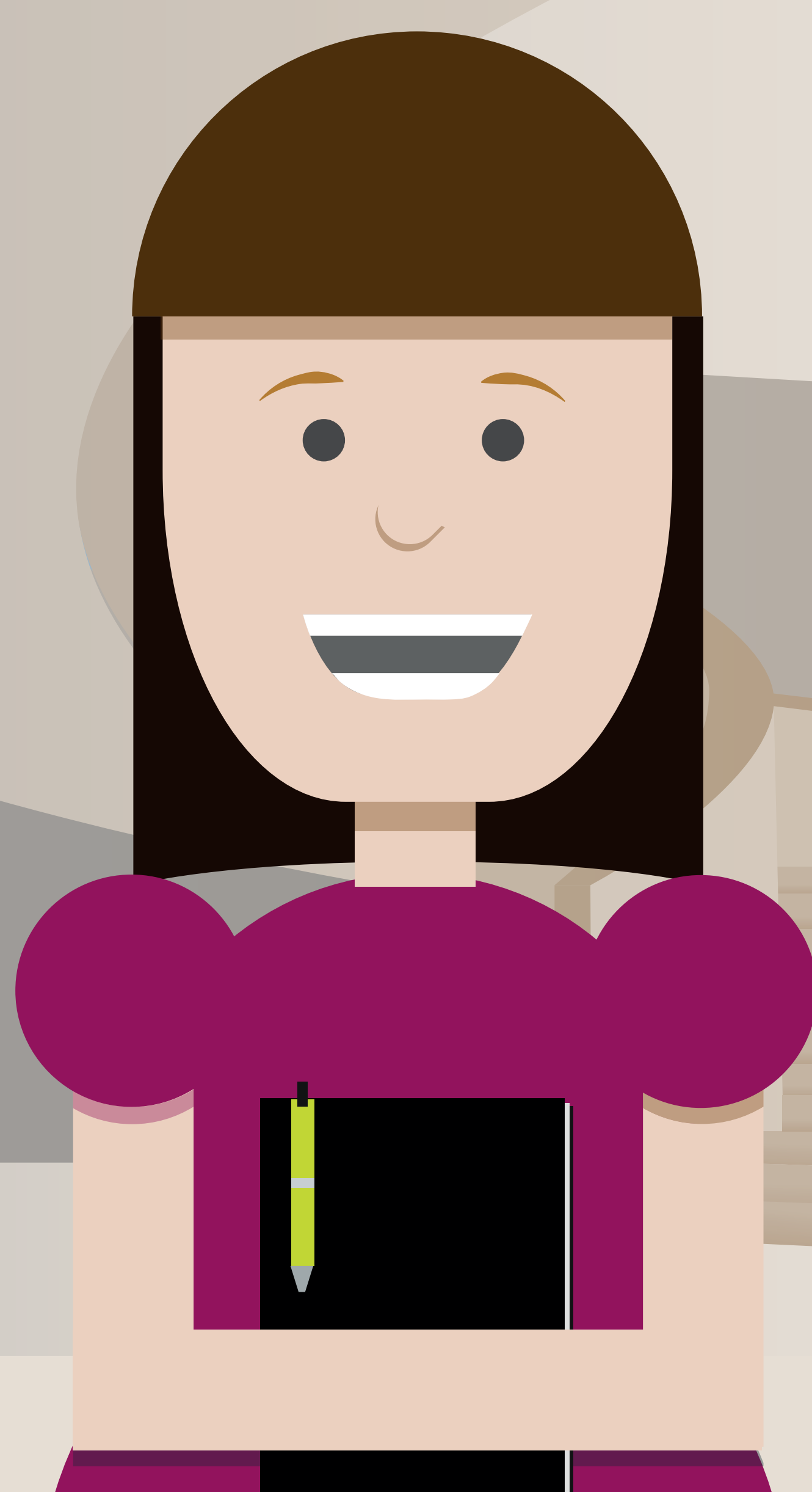
Are you a New Starter looking for more information in Clement House, Pankhurst House, or Lionel Robbins Building?

Follow the steps on the PDF find out what you need to know to settle into our staff community.

1

## Before your first day

- Get to know your campus »
- Discover what Blended Working means for you »
- A big LSE welcome for new staff »



2

## During your first week

- How to book a desk »
- Need to book a meeting room? »
- Which type of workspace do you need? »
- How to use technology for hybrid meetings »
- Get set up with our tech guide »



**Need support getting set up?**  
Get in touch with our dedicated teams »

3

## End of your first month

- Set your SMART objectives »
- Learn about the LSE's Effective Behaviours Framework »
- Find out more about making a success of our office principles »



4

## During your first few months and beyond

Take workshops for thriving in a blended environment. »

- Understanding Blended Working »
- Managing Self »
- Managing Individuals »
- Managing Teams »

